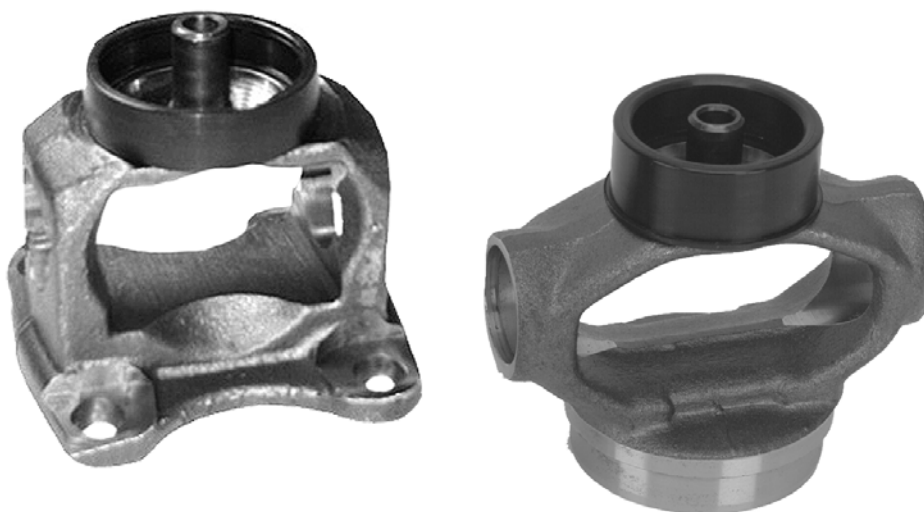


ROCKFORD

Drive Line

Stud Yokes



Weld, Flanged & Slip

MANUFACTURER OF DRIVELINE COMPONENTS
1500 11TH AVENUE ROCKFORD, ILLINOIS 61104
PHONE (815) 962-1411 FAX (815) 965-4857
RockfordDriveLine.com

How to Use This Section

Determine which type of stud yoke you need by referring to the illustrations and descriptions at the top of each page.

To identify a stud yoke (Weld In Style)

1. Determine the series of the yoke. This can also be determined by measuring the bearing diameter (**A**) and snap ring lockup (**B**).
*Note: Inside snap ring type yokes will show the B dimension followed by (I)
 Outside snap ring type yokes will show the B dimension followed by (O)*
2. Determine the tube diameter & wall thickness or continue to step 4.
3. Determine the butt diameter (**C**) by measuring the inside diameter of the tubing & adding .010".
Note: You are adding .010" to the inside diameter of the tube to achieve the press fit required between the tubing and stub shaft.
4. Determine the stud diameter (**D**) & stud length (**E**).
5. Determine the dust shield design required for your application. **Steel** dust shields (early) are used with centering assemblies using external design seals. **Rubber** dust shields (late) are used with centering assemblies using internal design seals.

Centerline to Weld & Centerline to Stud are also included for additional identification.

Part series are shown in ***Bold Italics*** for easy lookup - RDL Kit number is also shown to the far right of each series for quick referencing.

RDL Part Number	A Bearing Diameter	B Snap Ring Lockup - (O/I)	Fits Tube Dia. / Wall	C Butt Diameter	D / E Ball Stud Dia. / Length	F Centerline to Weld	G Centerline to Stud	Dust Shield Design
-----------------	-----------------------	-------------------------------	-----------------------	--------------------	----------------------------------	-------------------------	-------------------------	--------------------

1330 Series

Use RDL Kit - K213 or K1203

R2-28-2157	1.063	3.622 - (O)	2.000 / .120	1.770	.500 / .594	1.365	1.640	Steel
------------	-------	-------------	--------------	-------	-------------	-------	-------	-------

Notice: The data contained in this catalog has been thoroughly checked for accuracy, however we cannot assume any responsibility for errors, omissions or typographical mistakes that may appear.

**To identify a stud yoke
(Flanged Style)**

1. Determine the series of the yoke. All flanged style stud yokes Rockford offers have 1.125" bearing diameter, 2.126 internal snap ring lockup & 1.809 pilot diameters.
2. Determine the stud diameter **(A)** & stud length **(B)**.
3. Determine the bolt hole diameter **(C)** and the bolt pattern dimensions **(D & E)**

Centerline to Flange, Centerline to Stud & Bolt Circle are also included for additional identification.

Part series are shown in ***Bold Italics*** for easy lookup - RDL Kit number is also shown to the far right of each series for quick referencing.

Note: All flanges listed have 1.125 bearing diameter, 2.126 internal lockup & 1.809 pilot diameters.

RDL Part Number	A Stud Diameter	B Stud Height	Bolt Hole Dimensions			F Centerline to Flange	G Centerline to Stud	Bolt Circle
			C	D	E			
<i>2.5R Series</i>								
								<i>Use RDL Kit - K2532</i>
R25-2-3138	.470	.813	.328	2.696	2.364	1.482	1.700	3.575

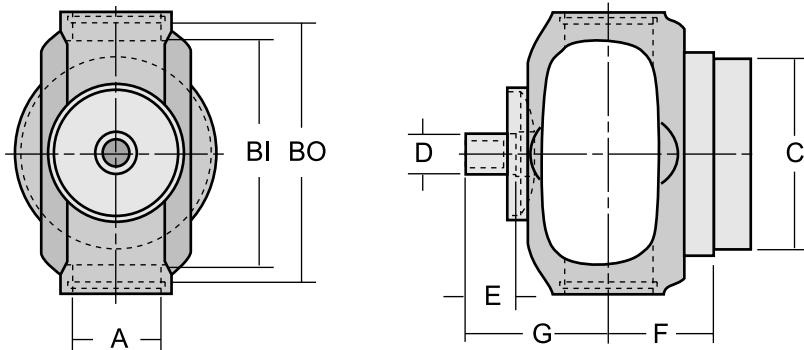
**To identify a stud yoke
(Flanged Style)**

1. Determine the series of the yoke. This can also be determined by measuring the bearing diameter **(A)** and snap ring lockup **(B)**.
2. Determine the major diameter of the spline **(D)**.

Number of teeth, centerline to end, distance across ears & dust cap numbers are also included for additional identification.

RDL Part Number	A Bearing Diameter	B Snap Ring Lockup - (O/I)	C Number of Teeth	D Major Spline Dia.	E Center Line To End	F Distance Across Ears	Dust Cap Number Inc.
<i>1310 Series</i>							
<i>Use RDL Kit - K153</i>							
R2-3-3130	1.063	3.217 - (O)	16	1.375	6.188	3.469	R2-80-194Z

STUD YOKES (Weld In Style)



RDL Part Number	A Bearing Diameter	B Snap Ring Lockup - (O/I)	Fits Tube Dia. / Wall	C Butt Diameter	D / E Ball Stud Dia. / Length	F Centerline to Weld	G Centerline to Stud	Dust Shield Design
-----------------	-----------------------	-------------------------------	-----------------------	--------------------	----------------------------------	-------------------------	-------------------------	--------------------

1210 Series

Use RDL Kit - K443

R2-28-3110	1.063	2.437 - (O)	1.250 / .120	1.016	.500 / .594	1.312	1.640	Steel
R2-28-2467	1.063	2.437 - (O)	2.000 / .120	1.770	.500 / .594	1.312	1.640	Steel
R2-28-2717**	1.063	2.437 - (O)	2.000 / .083	1.844	.500 / .594	1.312	1.640	Steel
R2-28-2407	1.063	2.437 - (O)	2.500 / .065	2.380	.500 / .594	1.312	1.640	Steel
R2-28-3128	1.063	2.437 - (O)	2.500 / .083	2.344	.500 / .594	1.312	1.640	Steel

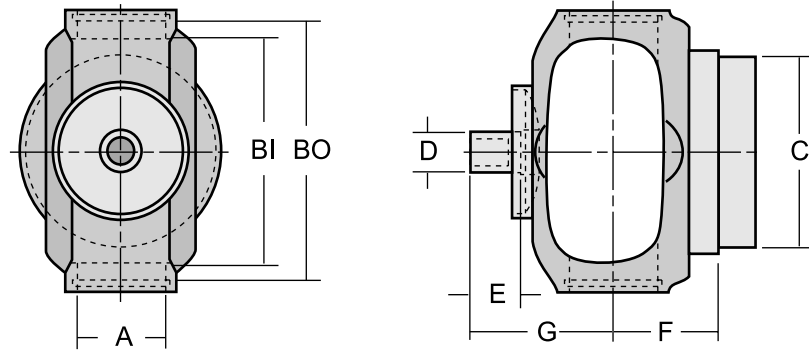
1310 Series

Use RDL Kit - K153

R2-28-2997	1.063	3.217 - (O)	1.250 / .120	1.016	.500 / .594	1.438	1.640	Steel
R2-28-2807	1.063	3.217 - (O)	1.250 / .120	1.016	.500 / .594	1.438	1.653	Rubber
R2-28-3158**	1.063	3.217 - (O)	1.250 / .188	0.879	.500 / .594	1.438	1.640	Steel
R2-28-3237	1.063	3.217 - (O)	1.500 / .120	1.266	.500 / .594	1.438	1.653	Rubber
R2-28-2937	1.063	3.217 - (O)	1.750 / .095	1.570	.500 / .594	1.438	1.640	Steel
R2-28-2827	1.063	3.217 - (O)	1.750 / .095	1.570	.500 / .594	1.438	1.653	Rubber
R2-28-2947	1.063	3.217 - (O)	2.000 / .120	1.770	.500 / .594	1.438	1.640	Steel
R2-28-2867	1.063	3.217 - (O)	2.000 / .120	1.770	.500 / .594	1.438	1.653	Rubber
R2-28-3087	1.063	3.217 - (O)	2.500 / .065	2.380	.500 / .594	1.438	1.653	Rubber
R2-28-2957	1.063	3.217 - (O)	2.500 / .083	2.344	.500 / .594	1.438	1.640	Steel
R2-28-2887	1.063	3.217 - (O)	2.500 / .083	2.344	.500 / .594	1.438	1.653	Rubber
R2-28-2987	1.063	3.217 - (O)	2.750 / .065	2.625	.500 / .594	1.438	1.640	Steel
R2-28-2747	1.063	3.217 - (O)	2.750 / .065	2.625	.500 / .594	1.438	1.653	Rubber
R2-28-3817**	1.063	3.217 - (O)	2.750 / .083	2.594	.500 / .594	1.438	1.640	Steel
R2-28-2967	1.063	3.217 - (O)	3.000 / .065	2.875	.500 / .594	1.438	1.640	Steel
R2-28-2907	1.063	3.217 - (O)	3.000 / .065	2.875	.500 / .594	1.438	1.653	Rubber
R2-28-2977	1.063	3.217 - (O)	3.000 / .083	2.844	.500 / .594	1.438	1.640	Steel
R2-28-2927	1.063	3.217 - (O)	3.000 / .083	2.844	.500 / .594	1.438	1.653	Rubber

** New addition to MC1006-7 catalog

STUD YOKES (Weld In Style)



RDL Part Number	A Bearing Diameter	B Snap Ring Lockup - (O/I)	Fits Tube Dia. / Wall	C Butt Diameter	D / E Ball Stud Dia. / Length	F Centerline to Weld	G Centerline to Stud	Dust Shield Design
-----------------	-----------------------	-------------------------------	-----------------------	--------------------	----------------------------------	-------------------------	-------------------------	--------------------

1330 Series

Use RDL Kit - K213 or K1203

R2-28-2157	1.063	3.622 - (O)	2.000 / .120	1.770	.500 / .594	1.365	1.640	Steel
R2-28-3257	1.063	3.622 - (O)	2.000 / .120	1.770	.500 / .594	1.365	1.653	Rubber
R2-28-2137	1.063	3.622 - (O)	2.500 / .083	2.344	.500 / .594	1.365	1.640	Steel
R2-28-3067	1.063	3.622 - (O)	2.500 / .083	2.344	.500 / .594	1.365	1.653	Rubber
R2-28-3277	1.063	3.622 - (O)	2.500 / .095	2.312	.500 / .594	1.365	1.653	Rubber
R2-28-3193**	1.063	3.622 - (O)	2.750 / .095	2.568	.500 / .594	1.365	1.653	Rubber
R2-28-2187	1.063	3.622 - (O)	3.000 / .083	2.844	.500 / .594	1.365	1.640	Steel
R2-28-3447**	1.063	3.622 - (O)	3.000 / .083	2.844	.500 / .594	1.365	1.653	Rubber

3R Series

Use RDL Kit - K3147

R3R-28-3122	1.125	2.556 - (I)	1.250 / .120	1.016	.906 Ball	1.422	1.937	Steel
R3R-28-3121	1.125	2.556 - (I)	1.250 / .188	.868	.906 Ball	1.422	1.937	Steel
R3R-28-3113	1.125	2.556 - (I)	2.000 / .120	1.770	.906 Ball	1.422	1.937	Steel
R3R-28-3134	1.125	2.556 - (I)	2.500 / .083	2.344	.906 Ball	1.422	1.937	Steel
R3R-28-3111	1.125	2.556 - (I)	2.750 / .065	2.625	.906 Ball	1.422	1.937	Steel
R3R-28-3182**	1.125	2.556 - (I)	3.000 / .083	2.844	.906 Ball	1.422	1.937	Steel

1350 Series (Spicer Style Shafts)

Use RDL Kit - K178

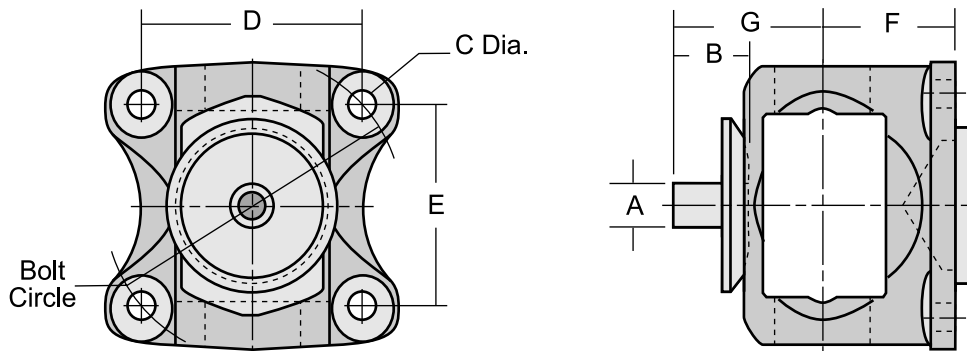
R3-28-3132	1.188	3.622 - (O)	2.500 / .083	2.344	.500 / .625	1.469	1.744	Rubber
R3-28-3133	1.188	3.622 - (O)	2.750 / .083	2.594	.500 / .625	1.469	1.744	Rubber
R3-28-1327	1.188	3.622 - (O)	3.000 / .083	2.844	.500 / .625	1.469	1.744	Rubber
R3-28-1527**	1.188	3.622 - (O)	3.500 / .083	3.342	.500 / .625	1.469	1.744	Rubber

1355 Series (AAM Style Shafts)

Use RDL Kit - K178

R3-28-7316	1.188	3.622 - (O)	2.750 / .083	2.594	.906 Ball	1.469	2.094	Steel
------------	-------	-------------	--------------	-------	-----------	-------	-------	-------

STUD YOKES (Flanged Style)



Note: All flanges listed have 1.125 bearing diameter, 2.126 internal lockup & 1.809 pilot diameters.

RDL Part Number	A Stud Diameter	B Stud Height	Bolt Hole Dimensions			F Centerline to Flange	G Centerline to Stud	Bolt Circle
			C	D	E			

2.5R Series

Use RDL Kit - K2532

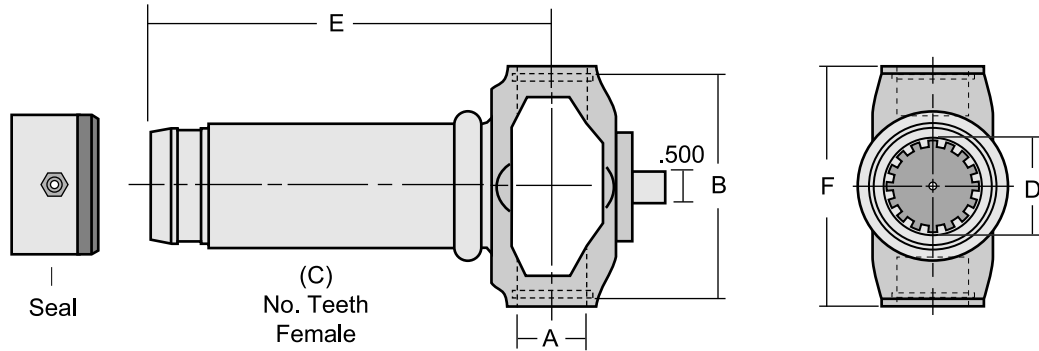
R25-2-3138	.470	.813	.328	2.696	2.364	1.482	1.700	3.575
R25-2-3142	.470	.813	.394	2.696	2.364	1.482	1.700	3.575
R25-2-3140	.470	.813	.394	2.750	2.426	1.482	1.700	3.670
R25-2-3139	.511	.938	.328	2.696	2.364	1.482	1.827	3.575
R25-2-3141	.511	.938	.394	2.750	2.426	1.482	1.827	3.670
R25-2-3143	.511	.938	.410	2.360	2.360	1.521	1.858	3.340
R25-2-3144	.511	.938	.445	2.596	2.596	1.521	1.858	3.670

2.5R Series (Conversion Flanges) - use with 1st design components

Use RDL Kit - K2532

R25-2-3162**	.470	.813	.410	2.360	2.360	1.482	1.700	3.340
R25-2-3163**	.470	.813	.445	2.596	2.596	1.482	1.700	3.670

BALL STUD SLIP YOKES (C.V. Applications)



RDL Part Number	A Bearing Diameter	B Snap Ring Lockup - (O/I)	C Number of Teeth	D Major Spline Dia.	E Center Line To End	F Distance Across Ears	Dust Cap Number Inc.
1210 Series			Use RDL Kit - K443				
R2-3-3129	1.063	2.437 - (O)	16	1.250	6.375	2.688	R2-80-196Z
1310 Series			Use RDL Kit - K153				
R2-3-3130	1.063	3.217 - (O)	16	1.375	7.063	3.469	R2-80-194Z
1330 Series			Use RDL Kit - K1203 or K213				
R2-3-3131	1.063	3.622 - (O)	16	1.375	6.438	3.875	R2-80-194Z
R2-3-3134	1.063	3.622 - (O)	16	1.500	8.188	3.875	RD3A

Notes:



PART NUMBER INTERCHANGE LIST

MFG. NO.	OUR NO.	MFG. NO.	OUR NO.
Neapco		415E	R25-2-3143
N2-28-2137	R2-28-2137	416	R2-28-2407
N2-28-2157	R2-28-2157	417	R2-28-2467
N2-28-2407	R2-28-2407	418	R2-28-2137
N2-28-2467	R2-28-2467	Spicer	
N2-28-2747	R2-28-2747	2-28-2137X	R2-28-2137
N2-28-2807	R2-28-2807	2-28-2157X	R2-28-2157
N2-28-2827	R2-28-2827	2-28-2187X	R2-28-2187
N2-28-2867	R2-28-2867	2-28-2407X	R2-28-2407
N2-28-2887	R2-28-2887	2-28-2747X	R2-28-2747
N2-28-2907	R2-28-2907	2-28-2827X	R2-28-2827
N2-28-2927	R2-28-2927	2-28-2867X	R2-28-2867
N2-28-2937	R2-28-2937	2-28-2887X	R2-28-2887
N2-28-2947	R2-28-2947	2-28-2907X	R2-28-2907
N2-28-2957	R2-28-2957	2-28-2927X	R2-28-2927
N2-28-2967	R2-28-2967	2-28-2937X	R2-28-2937
N2-28-2977	R2-28-2977	2-28-2947X	R2-28-2947
N2-28-2987	R2-28-2987	2-28-2957X	R2-28-2957
N2-28-2997	R2-28-2997	2-28-2967X	R2-28-2967
N2-28-3067	R2-28-3067	2-28-2977X	R2-28-2977
N2-28-3087	R2-28-3087	2-28-2987X	R2-28-2987
N2-28-3257	R2-28-3257	2-28-2997X	R2-28-2997
N2-28-3277	R2-28-3277	2-28-3067X	R2-28-3067
N2-28-3447	R2-28-3447**	2-28-3087X	R2-28-3087
N2-28-3817	R2-28-3817**	2-28-3257X	R2-28-3257
N3-28-1327-1X	R3-28-1327	2-28-3277X	R2-28-3277
N3-28-1527-1X	R3-28-1527**	2-28-3447X	R2-28-3447**
N3-28-1747-1X	R3-28-3133	2-28-3657X	R2-28-3128
N3R-28-053	R3R-28-3122	2-28-3817X	R2-28-3817**
N3R-28-341	R3R-28-3111	3-28-1327X	R3-28-1327
N3R-28-869	R3R-28-3113	3-28-1527X	R3-28-1527**
Rockford (Old Numbers)		3-28-3133X	R3-28-3133
410	R3R-28-3113		
410A	R3R-28-3111		
410B	R3R-28-3122		
411	R2-28-2947		
412	R2-28-2997		
413	R2-28-2957		
415	R25-2-3138		
415A	R25-2-3139		
415B	R25-2-3140		
415C	R25-2-3141		
415D	R25-2-3142		

** New addition to MC1006-7 catalog

Notes:

PART NUMBER INDEX



PART NUMBER	PG	PART NUMBER	PG
R2-28-2137	5	R3-28-3132	5
R2-28-2157	5	R3-28-3133	5
R2-28-2187	5	R3-28-7316	5
R2-28-2407	4	R3R-28-3111	5
R2-28-2467	4	R3R-28-3113	5
R2-28-2717**	4	R3R-28-3121	5
R2-28-2747	4	R3R-28-3122	5
R2-28-2807	4	R3R-28-3134	5
R2-28-2827	4	R3R-28-3182**	5
R2-28-2867	4		
R2-28-2887	4		
R2-28-2907	4		
R2-28-2927	4		
R2-28-2937	4		
R2-28-2947	4		
R2-28-2957	4		
R2-28-2967	4		
R2-28-2977	4		
R2-28-2987	4		
R2-28-2997	4		
R2-28-3067	5		
R2-28-3087	4		
R2-28-3110	4		
R2-28-3128	4		
R2-28-3158**	4		
R2-28-3193**	5		
R2-28-3237	4		
R2-28-3257	5		
R2-28-3277	5		
R2-28-3447**	5		
R2-28-3817**	4		
R2-3-3129	7		
R2-3-3130	7		
R2-3-3131	7		
R2-3-3134	7		
R25-2-3138	6		
R25-2-3139	6		
R25-2-3140	6		
R25-2-3141	6		
R25-2-3142	6		
R25-2-3143	6		
R25-2-3144	6		
R25-2-3162**	6		
R25-2-3163**	6		
R3-28-1327	5		
R3-28-1527**	5		

** New addition to MC1006-7 catalog

MANUFACTURER OF DRIVELINE COMPONENTS
1500 11TH AVENUE ROCKFORD, ILLINOIS 61104
PHONE (815) 962-1411 FAX (815) 965-4857
RockfordDriveLine.com